



PRACTICE AID

LUNgevity Foundation: Small Cell Lung Cancer Resource Compendium

Full abbreviations, accreditation, and disclosure information available at [PeerView.com/WFE40](https://www.peerview.com/WFE40)

PeerView
Oncology



Through research, advocacy, and community, LUNgevity is transforming what it means to be diagnosed and live with lung cancer



LUNgevity educational materials order form for providers:
www.lungevity.org/order-materials

The following pages include information for patients with lung cancer for use as a printable resource

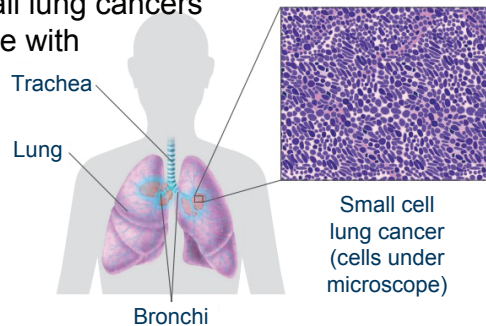


[lungevity.org](https://www.lungevity.org)

1

What Is Small Cell Lung Cancer (SCLC)?

- SCLC is one of the two major types of lung cancer
- It accounts for about 15% of all lung cancers
- It is most often found in people with a smoking history
- SCLC derives its name from the way the cancer cells look under a microscope



2

The Stages of SCLC

- Lung cancer staging describes where the cancer is located, if and where it has spread, and whether it is affecting other parts of the body
- Treatments are available for every stage

Most commonly used system: 2 stages

Limited-stage: cancer is only in one side of the chest: one lung, the tissues between the lungs, and nearby lymph nodes only

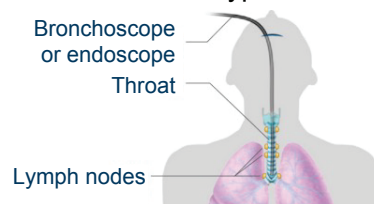
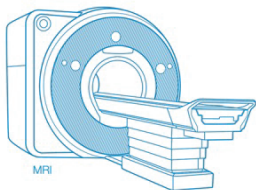
Extensive-stage: cancer has spread more widely throughout the lung, to the other lung, to lymph nodes on the other side of the chest, or to distant organs

3

Diagnosis of SCLC

Many different tests are used to diagnose SCLC, including

- Imaging: tests that create pictures of the inside of the body by x-rays, magnetic fields, sound waves, or radioactive particles
- Biopsies: tests in which small amounts of tissue are removed for examination to find out if a person has lung cancer and, if so, which type



4

Treatment Options

Currently approved treatment options for SCLC include:

- Surgery
- Radiation therapy
- Chemotherapy
- Immunotherapy

In addition, several new types of treatment are being studied for SCLC. These are available through clinical trials.

Educational Materials and Supporting Resources

One-Page Fact Sheets



What is small cell lung cancer (SCLC)?



Questions to ask your doctor to better understand SCLC, stage, and treatment options



Resources and support for SCLC

Booklets: www.LUNgevity.org/booklets



In booklet 1, you will learn

- What SCLC is
- What lung cancer staging is
- The stages of SCLC



In booklet 2, you will learn

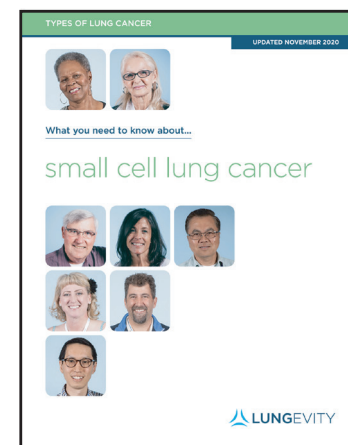
- Types of tests doctors do to find SCLC
- What happens during imaging tests
- Why doctors do biopsies and what happens during them
- Other ways doctors learn about your health



In booklet 3, you will learn

- How you and your doctor will decide on a treatment plan
- What the treatment options are for SCLC
- Common side effects of treatment

Comprehensive booklet



Find Your Community



Join the LUNgevity Small Cell Lung Cancer Facebook Group

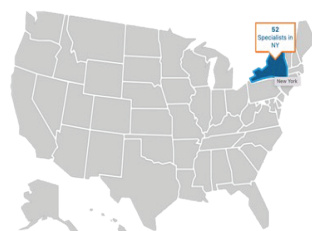


Join the LUNgevity Lung Cancer Support Community Forum
• Small Cell group



Join the LUNgevity Virtual Meetups

Find a Specialist



Find a Clinical Trial



Blog and Forum

NEW BLOG

THE BASICS OF NEUROENDOCRINE TUMORS

Lauren Byers, MD
University of Texas MD Anderson Cancer Center
LUNgevity Scientific Advisory Board

LUNGEVITY
Transforming Lung Cancer



The Small Cell Lung Cancer Patient Gateway is a tailored portal for people with SCLC to learn more about treatment for SCLC, connect to experts and SCLC patient communities, and access educational resources